

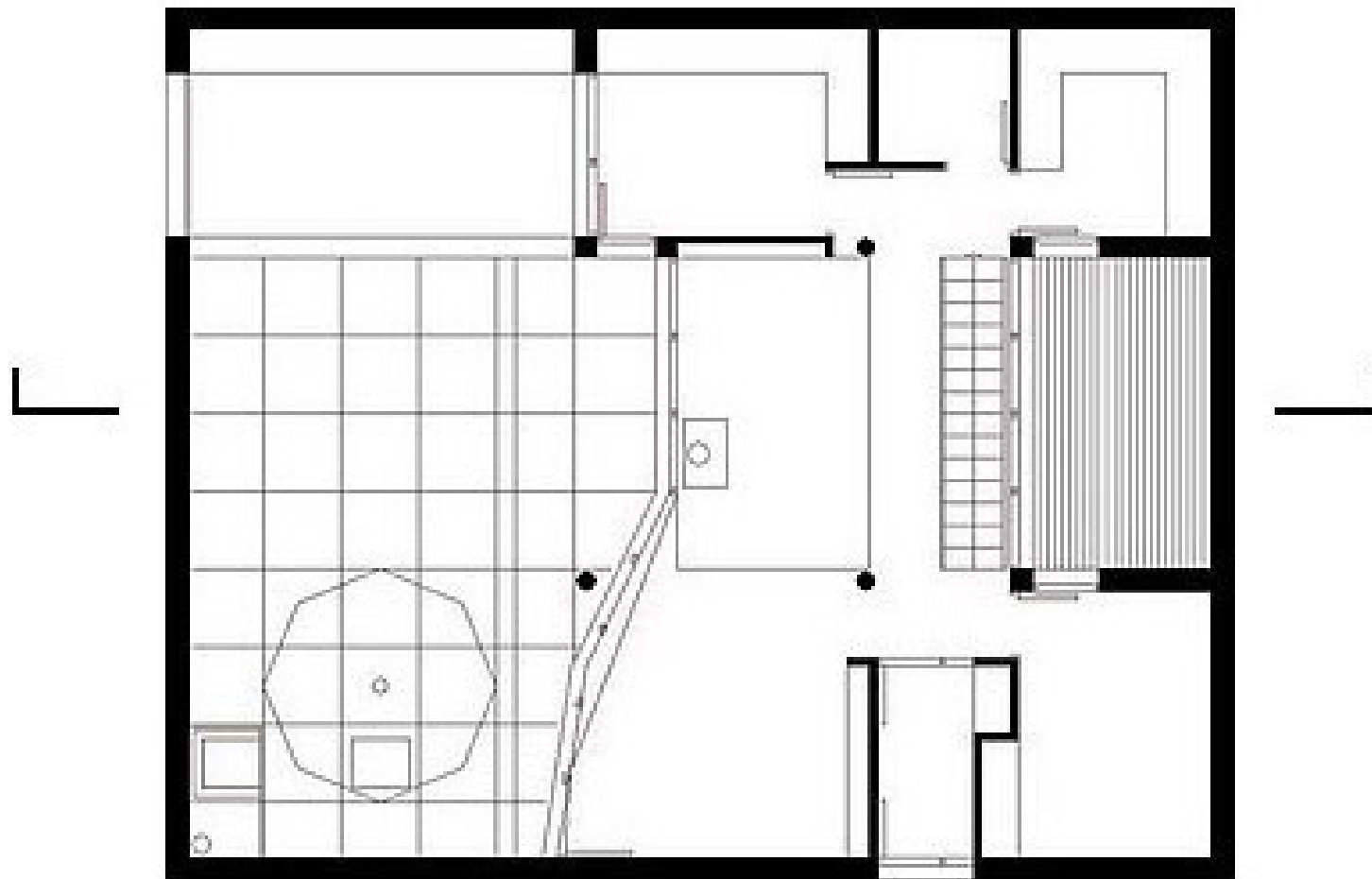


Casa IGS

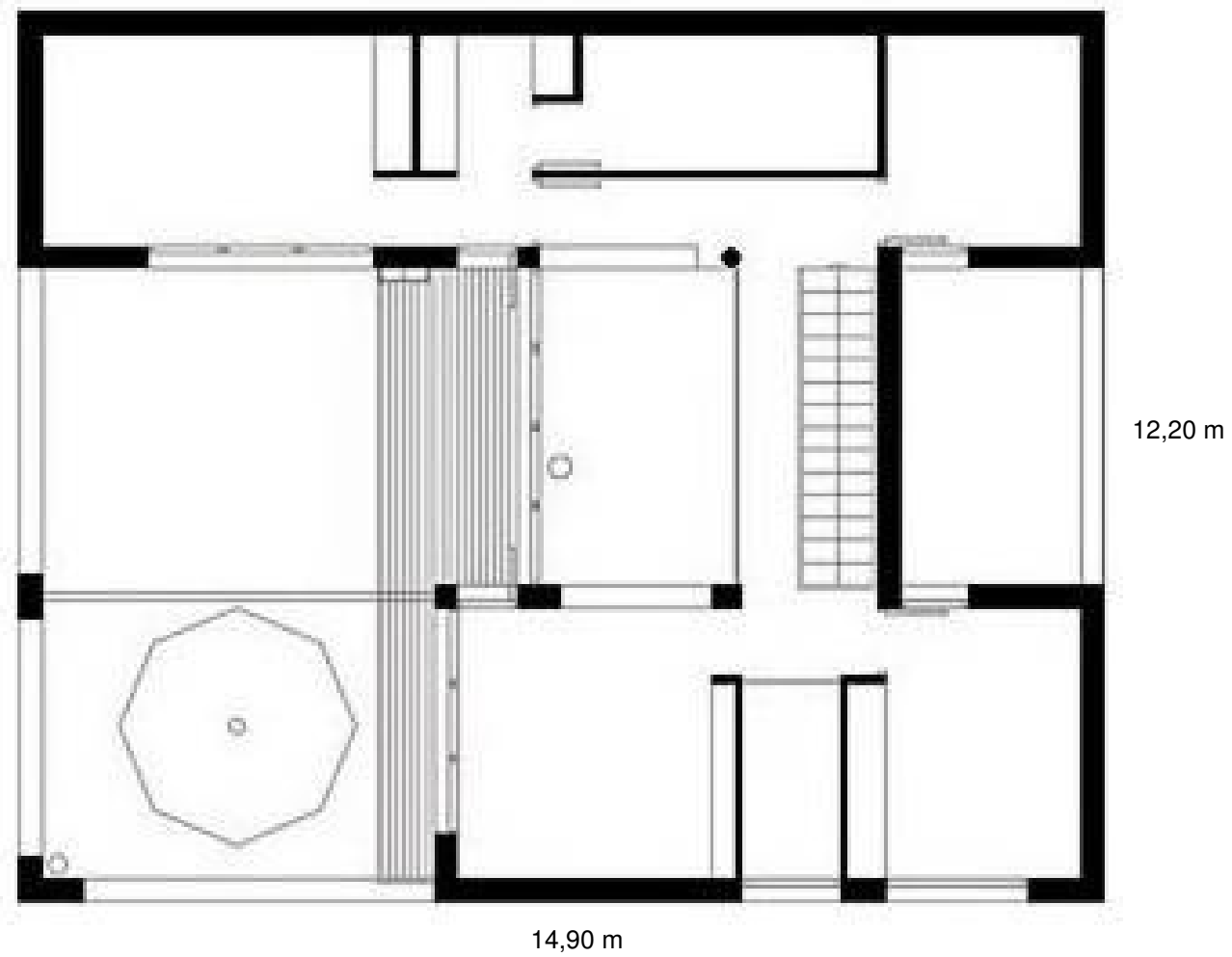
Masalfasar

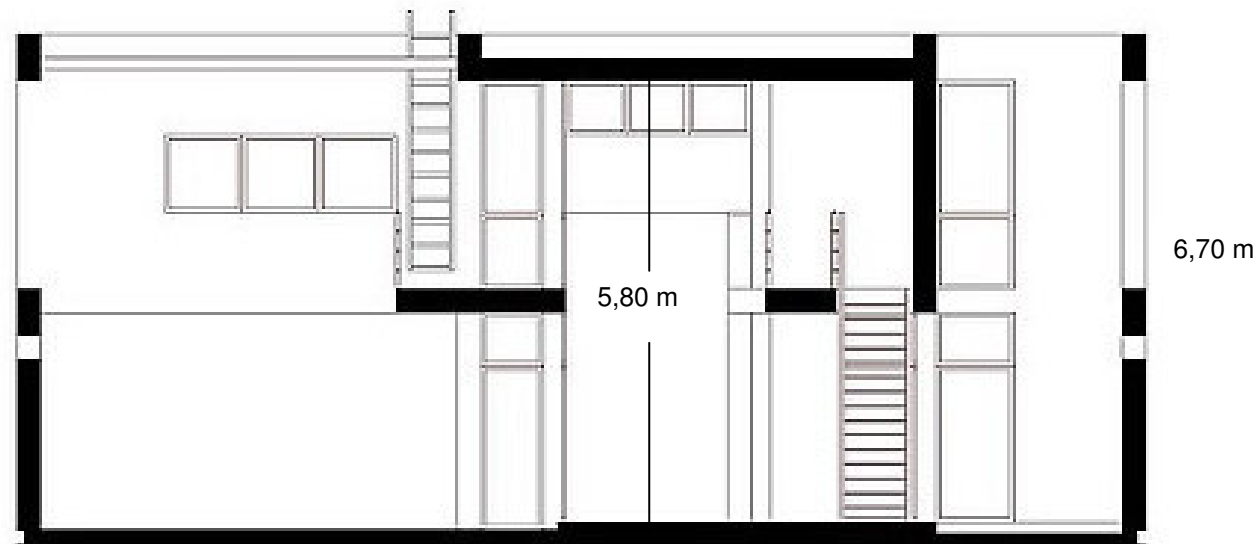
Arqtos: Cerdá y Vila





ESCALA APROXIMADA 1:100





ESCALA APROXIMADA 1:100

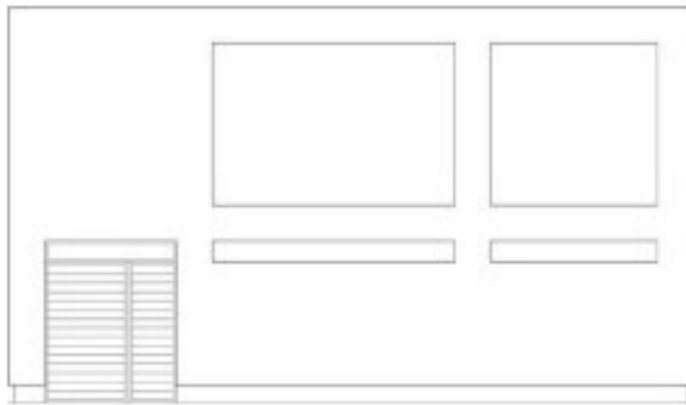
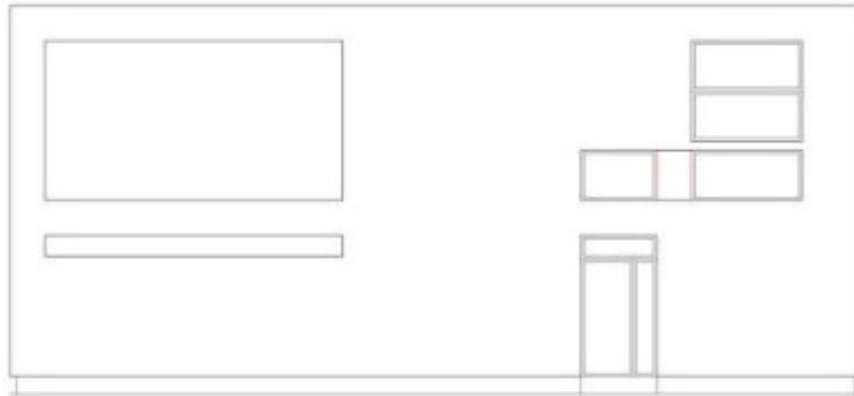
Grosor de paredes: 30cm. Tabiques interiores: 10cm

Escalera: 16 huellas de 27cm

Altura libre interior entre plantas: 2,75m

Forjado primer piso: 0,30m. Forjado de cubierta: 0,30m + 0,30m

Altura de puertas: 2,05m





Casa IGS .Masalfasar . Arqtos: Cerdá y Vila.









